

# IP - 2MP OUTDOOR DOME Camera

## VN1V-2N66E



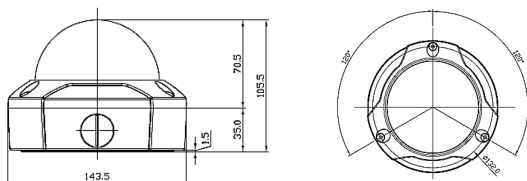
### Features

- 1/2.8" Sony STARVIS CMOS Sensor
- Progressive Scan
- Total Number of Pixels: 1945 x 1109 (2.16 MP)
- Full HD 1080p @ 30 fps
- H.265, H.264, MJPEG
- IP Network
- Web Server Built-in
- 3DNR / DOL True WDR
- ONVIF Compatibility
- PoE support

### Physical

- 2.7-13.5mm (F1.4) Motorized Varifocal Lens
- Aluminium Die Casting
- White Color
- Ø100mm Dome Cover Size
- Ø143.5mm Housing Size
- Lens Option: 3.6mm Fixed Lens (F2.0)

### Dimensions



### CAMERA

Image Sensor	1/2.8" Sony CMOS Sensor - IMX307
Total Pixels	1945 x 1109 (2.16 MP)
Effective Pixels	1920 x 1080 (2.07 MP)
Scanning Mode	Progressive Scan
Minimum Illumination	Color: 0.05 Lux   B&W: 0.005 Lux
S/N Ratio	More than 50dB (AGC off)

### LENS & IR LED

Lens Type	Motorized Varifocal Lens
Focal Length	2.7-13.5mm
Aperture Ratio	F1.4
IR LED	-

### CAMERA FUNCTIONS

Wide Dynamic Range	DOL HDR (Digital Over Lab High Dynamic Range)
Day and Night Mode	Automatic, Day, Night
Noise Reduction	3D-NR
Auto Exposure Mode	Automatic, Manual
Shutter Speed Control	Auto / Manual (1/30,000 - 1/30 sec)
Auto White Balance	Auto, Outdoor, Shade, Clear sky, Fluorescent light, Light Bulb, Manual
Digital Zoom	8x
BLC	On / Off
HLC	On / Off
Tamper	On / Off

### NETWORK

Video Compression	H.264 / H.265 / MJPEG
Video Resolution	1920 x 1080, 1280 x 960, 1280 x 720, 640 x 480, 640 x 360, 320 x 240
Video Frame Rate	1920 x 1080 @ up to 30 fps
Video Streaming	Simultaneously H.265, H.264, MJPEG, Independent Frame Rate and Bandwidth Control, VBR/CBR Mode
Protocols	TCP/IP, UDP, IPv4, IPv6, HTTP, HTTPS, FTP, UPnP, RTP, RTSP, TRCP, DHCP, ARP, Zeroconf, Bonjour, SNMP
Client Software	Built in Web, ONVIF Compatible 3rd Party VMS
Security	Multi user Authority, IP Filtering, HTTPS
Max User Connection	10 Users
Network Time Sync	Synchronize Computer / NTP Server, Manual
Software Reset	Restart, Reset, Factory Default
Remote Upgrader	Using Web Browser
Ethernet	RJ-45 (10/100 Base-T)
SDK Support	API, ONVIF Profile S/T Compliant

### GENERAL

Power Source	DC 12V (+/-) 10%, PoE IEEE802.3af, Class3
Power Consumption	210mA + 80mA (2 Motor Lens)
Operating Temperature	-10°C - +50°C / 0% - 90% RH
Dimension	Ø143.5mm x 105.5mm (H)