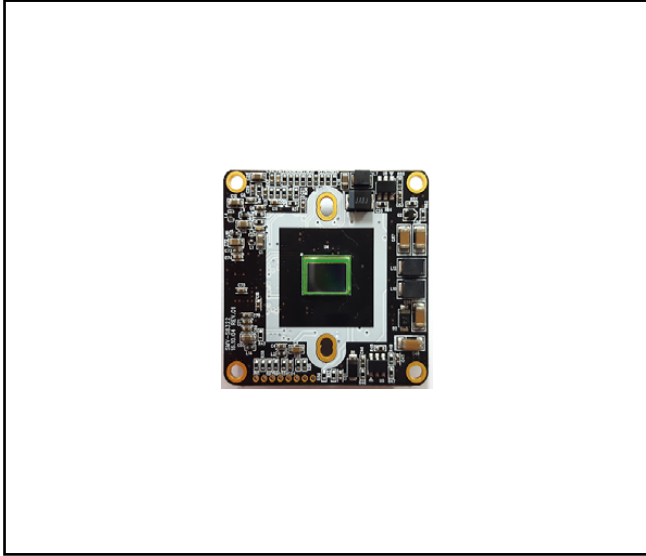


2MP Analog HD Module

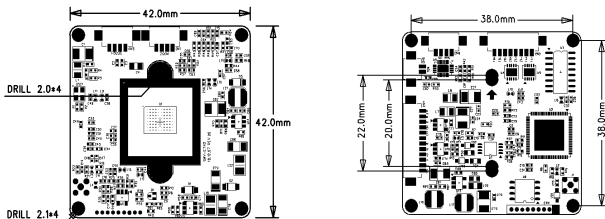
VNX-2E42



Product Highlight

- 1/2.9" 2.1MP SONY Progressive Scan Color CMOS Sensor
- HD-SDI, EX-SDI / AHD, TVI, CVI, CVBS
- DWDR
- 2DNR & 3DNR
- ACE
- 2 Motor Lens Support
- 42mm x 42mm

Dimensions



VNX-2E42	
Imaging Sensor	1/2.9" 2.1Megapixel COMS (IMX307)
Scanning System	Progressive Scan
Number of effective pixels	1985 x 1105 (2.19MP)
Total number of pixels	2001 x 1121 (2.24MP)
S/N Ratio	More than 50dB
Video Output Mode	1920 X 1080 @ 25/30 fps
Video Output Level	HD-SDI, EX-SDI (2.0) / AHD, TVI, CVI, CVBS
Min. Illumination	0.1 Lux(Color) , 0.01 Lux (BW)
O.S.D	Built-in
Electronic Shutter Speed	AUTO / FLICKER / MANUAL
	NTSC: 1/30 – 1/30,000 sec PAL: 1/25 – 1/25,000 sec
AGC	0 – 10 Step
Sens-up	OFF / x2 / x4 / x8 / x16 / x32
ACE	OFF / LOW / MIDDLE / HIGH
DEFOG	ON / OFF
Backlight Compensation	OFF / BLC / HLC / D-WDR
COLOR(White Balance)	AUTO / AUTOext / PRESET / MANUAL
Day & Night	AUTO / COLOR / BW / EXTTRN
DNR	OFF / LOW / MIDDLE / HIGH
FOCUS ADJ	On / Off
Motion Detection	On / Off (4 ZONE)
Privacy Masking	On / Off (16 ZONE)
Language	ENGLISH / CHINESES / JAPANESE / KOREAN
Supplied Voltage	DC12 ± 10%
Power Consumption	Max. 1.44W [120mA]
Dimensions	42mm x 42mm x 1.2mm(t)